

# KENWOOD

## TYPE KHC29

---

instructions

istruzioni

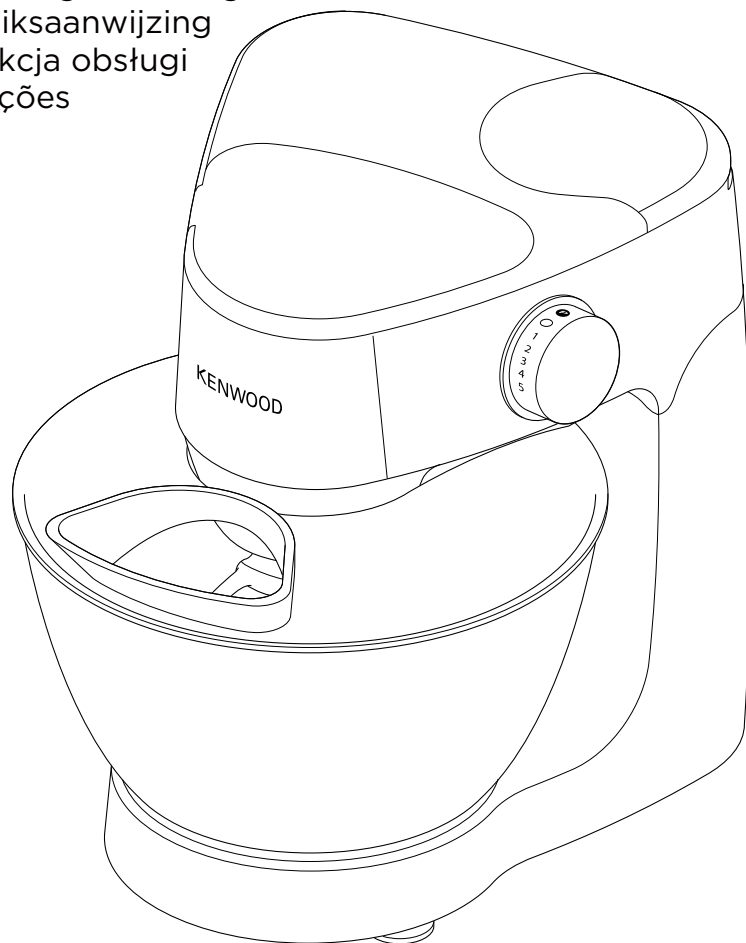
instrucciones

Bedienungsanleitungen

gebruiksaanwijzing

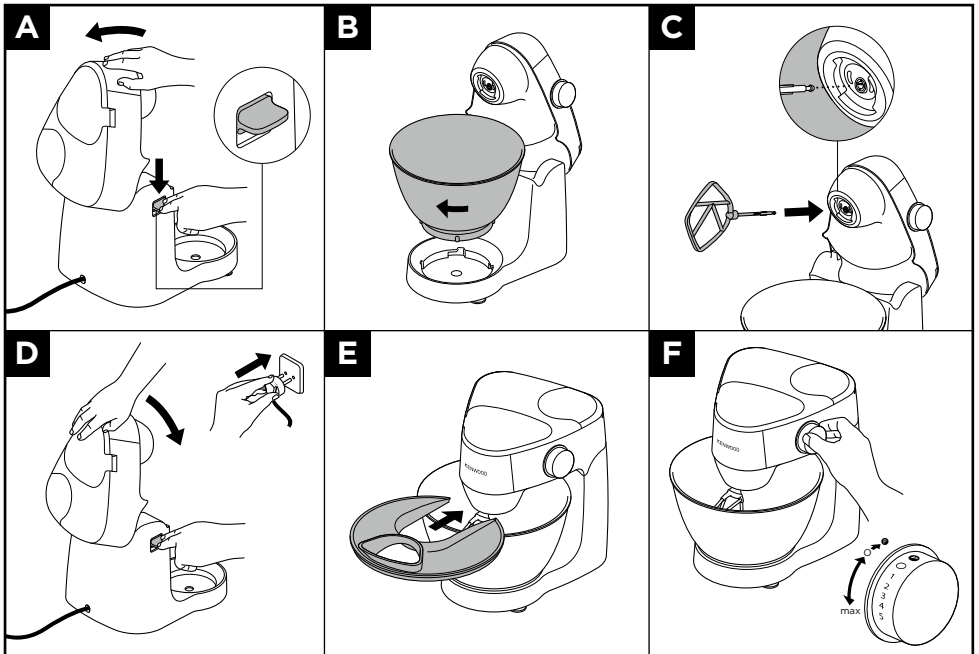
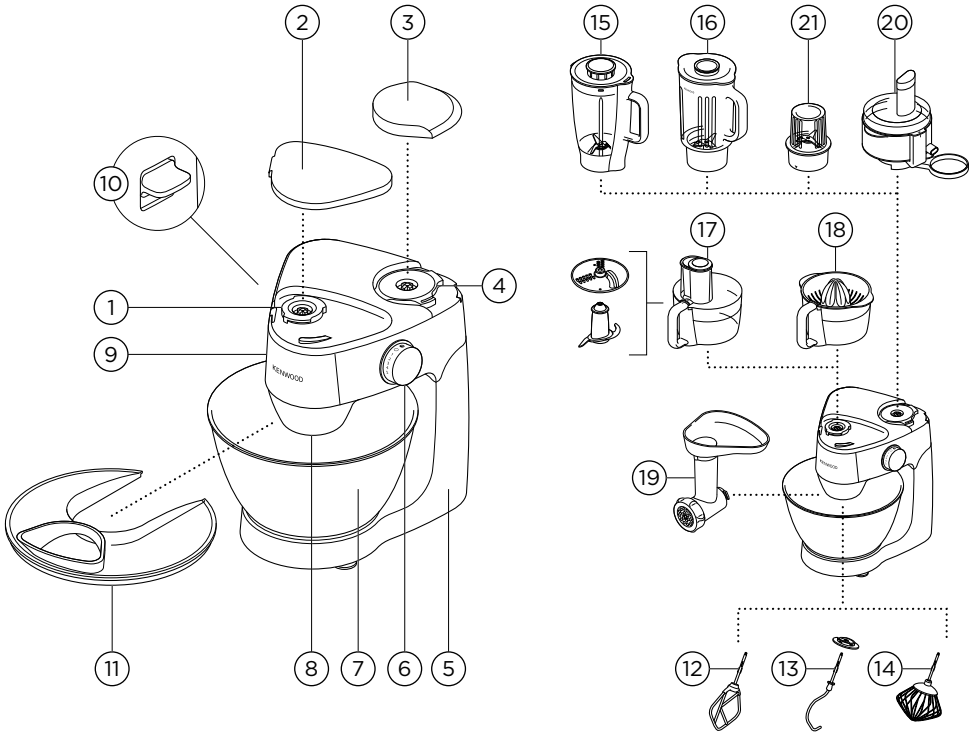
Instrukcja obsługi

instruções

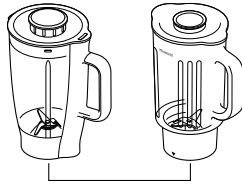


<b>Dansk</b>	<b>2 - 15</b>
<b>Svenska</b>	<b>16 - 30</b>
<b>Norsk</b>	<b>31 - 44</b>
<b>Suomi</b>	<b>45 - 59</b>
<b>Türkçe</b>	<b>60 - 74</b>
<b>Česky</b>	<b>75 - 89</b>
<b>Magyar</b>	<b>90 - 105</b>
<b>Polski</b>	<b>106 - 123</b>
<b>Ελληνικά</b>	<b>124 - 142</b>
<b>Slovenčina</b>	<b>143 - 158</b>
<b>Українська</b>	<b>159 - 176</b>

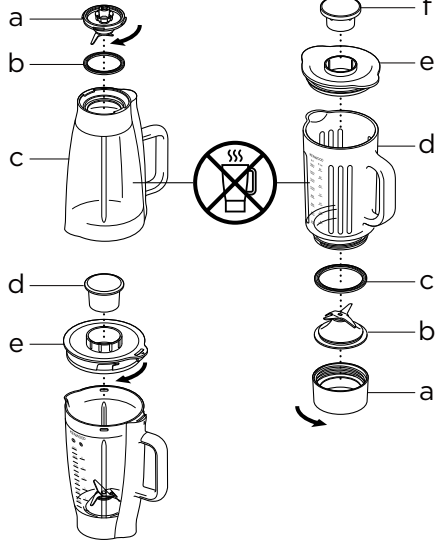
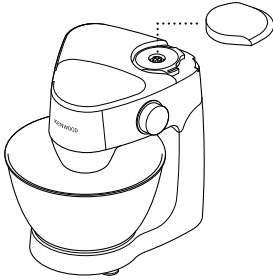
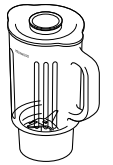




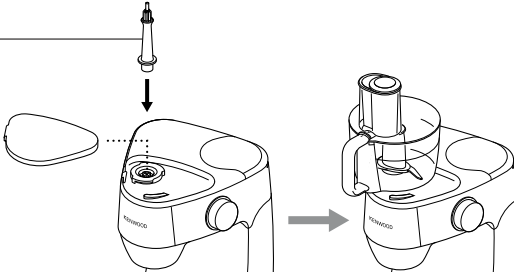
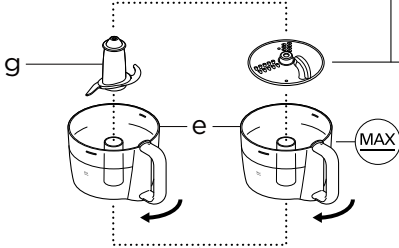
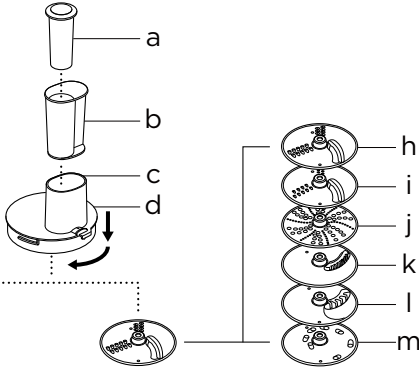
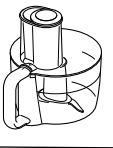
15



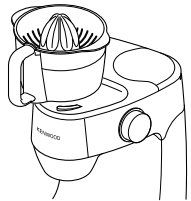
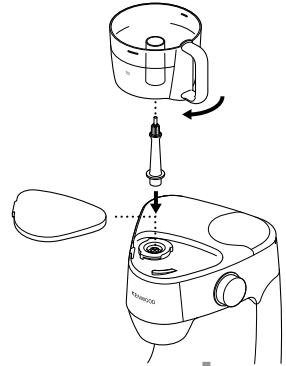
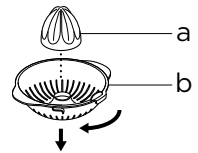
16

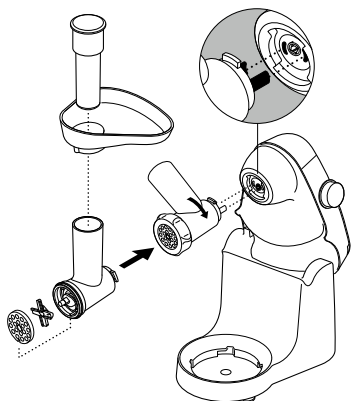
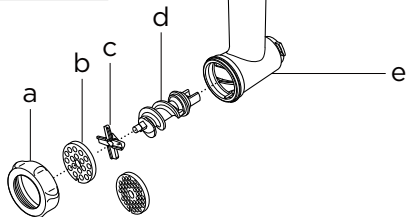
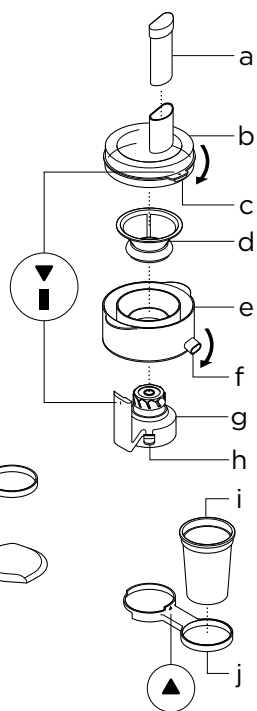
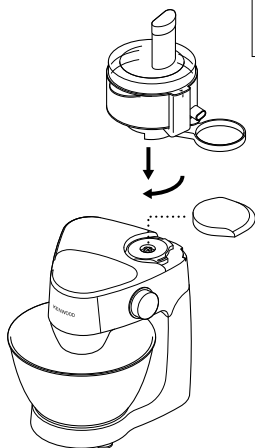
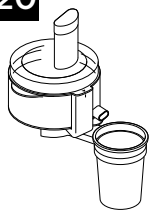
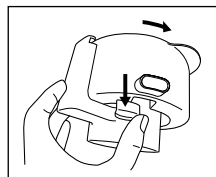
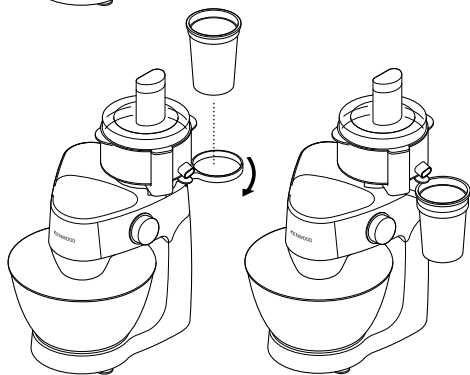
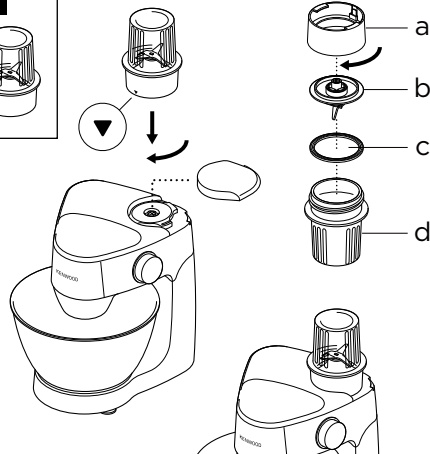
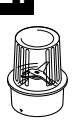


17



18






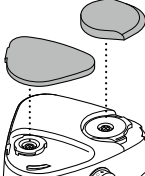
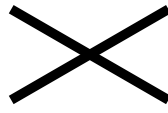
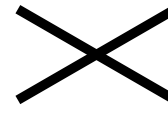
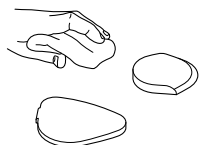
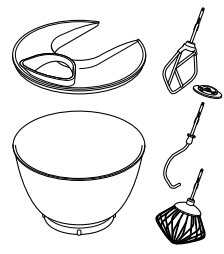
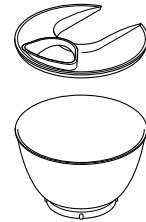


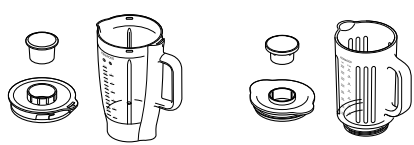
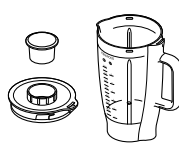


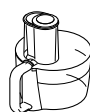
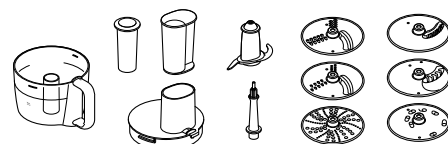

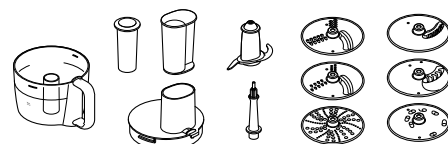
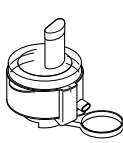
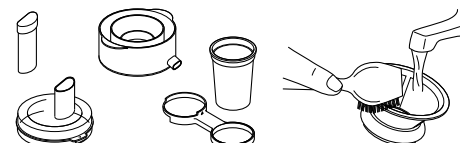
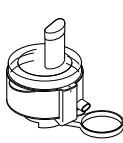




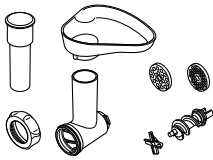
**19****20****21**

## Sikkerhed

- Læs denne brugervejledning nøje, og opbevar den i tilfælde af, at du får brug for at slå noget op i den.
- Fjern al emballage og mærkater.
- Hvis ledningen er beskadiget, skal den af sikkerhedsgrunde udskiftes af Kenwood eller en autoriseret Kenwood-reparatør.
- Drej hastighedsregulatoren til "O"-positionen (FRA), og tag stikket ud:
  - inden påsætning eller aftagning af kraftudtagsdæksler/redskaber/tilbehør;
  - efter og når den ikke er i brug;
  - før rengøring.
- **Lad ikke dit apparat køre i længere tid end de nedenfor specificerede tider uden pause. Kontinuerlig tilberedning i længere tid kan skade dit apparat.**

Funktion/ tilbehør	Maksimal brugstid	Pause i brug
Dejredskab	8 min.	Tag apparatets stik ud, og lad det køle ned i 15 minutter
Blender	60 sek.	
Kværn	30 sek.	
Kødhakker	10 min.	

- Hold fingrene væk fra bevægelige dele og påsat tilbehør. Kom aldrig hånden/fingrene i hængselsmekanismen.
- Lad aldrig køkkenmaskinen være uden opsyn, når den er i brug.
- Brug aldrig et beskadiget apparat. Få det kontrolleret eller repareret: Se afsnittet "Service og kundepleje".
- Lad aldrig ledningen hænge ned, så et barn kan gribe fat i den.
- Lad aldrig motorenheden, ledningen eller stikket blive våde.

**Kenwood Ltd**

New Lane  
Havant  
Hampshire  
PO9 2NH

[kenwoodworld.com](http://kenwoodworld.com)

© 2019 Kenwood Limited. All rights reserved



141701/1